

State of Wyoming Corner Record

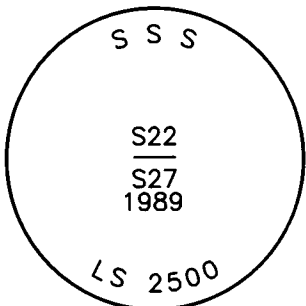
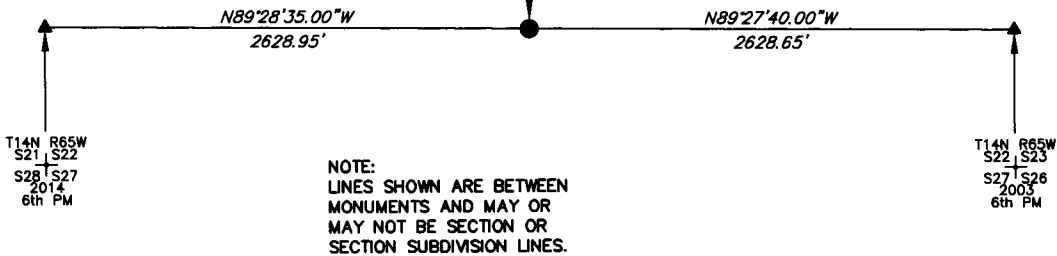
CORNER PERPETUATION AND FILING ACT,

Regulations of the Board of Registration for Professional Engineers and Land Surveyors.)
Reverse side of this form may be used if more space is needed.

Record of original survey and citation of source of historic information (if corner is lost or obliterated). Description of corner monumentation evidence found and/or monument and accessories established to perpetuate the location of this corner. Sketch of relative location of monument, accessories, and reference points with course and distance to adjacent corner(s) (if determined in this survey). Method and rationale for reestablishment of lost or obliterated corner.

THE MONUMENT IS FOR: T14N R65W S22 1/4 S27 1989 6th PM

FOUND THE MONUMENT FOR THIS 1/4 CORNER OF MAXIMUM CONTROL WHICH IS A 2" PRIVATE ALUMINUM CAP 0.3' BELOW THE SURFACE OF THE GROUND AND MARKED LS #2500.



THE MONUMENT IS MARKED

NOTE: LINES SHOWN ARE BETWEEN MONUMENTS AND MAY OR MAY NOT BE SECTION OR SECTION SUBDIVISION LINES.

CORNER MONUMENT SYMBOLS

- RECORD IS FOR THIS CORNER MONUMENT.
- ▲ A RELATED CORNER OR WC MONUMENT.

↑
N

SCALE 1"=1000'
(EXCEPT IN TRIVIAL CASES)
BEARINGS ARE RELATED TO WGS 84 WITH GPS OBSERVATIONS
DRAWN BY: SM
P.C. B. LOWREY
COUNTY: LARAMIE

Date of Field Work: 09/07/2014 Office Reference: _____

CROSS INDEX DIAGRAM

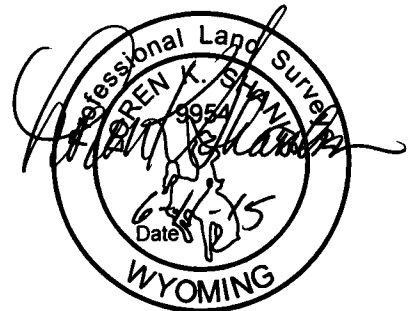
1	2	3	4	5	6	7	8	9	10	11	12	13	14	15	16	17	18	19	20	21	22	23	24	25	
A																									A
B																									B
C	6				5					4					3					2					C
D																									D
E																									E
F																									F
G	7				8					9					10					11					G
H																									H
J																									J
K																									K
L	8				17					16					15					14					L
M																									M
N																									N
O																									O
P	19				20					21					22					23					P
Q																									Q
R																									R
S																									S
T	30				29					28					27					26					T
U																									U
V																									V
W																									W
X	31				32					33					34					35					X
Y																									Y
Z																									Z
	1	2	3	4	5	6	7	8	9	10	11	12	13	14	15	16	17	18	19	20	21	22	23	24	25

Firm/Agency, Address

UELS, LLC
85 South 200 East
Vernal, Utah 84078
Telephone Number: 435-789-1017

This corner record was prepared by me or under my direction and supervision.

SEAL & SIGNATURE



1/4 CORNER OF MAXIMUM CONTROL
Corner Name: SOUTH 1/4 CORNER OF SECTION 22 Section: 22 T. 14N R. 65W ; 6TH P.M. Cross Index No.: R-15
SBRPEPLS/PLSW: March 1994 (CLCR...SJA)



RECP #: 670049

RECORDED 9/22/2015 AT 10:36 AM BK# 2465 PG# 57
Debra K. Lathrop, CLERK OF LARAMIE COUNTY, WY PAGE 1 OF 1